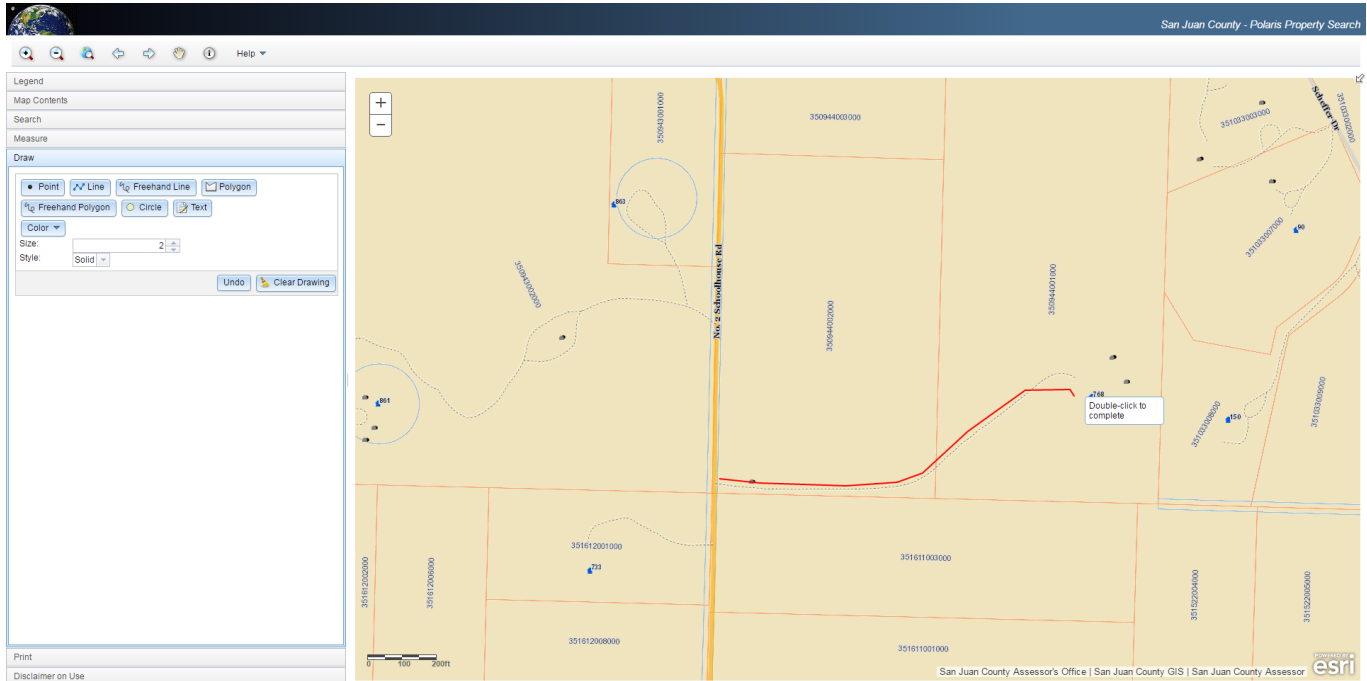


(Example of attached map) Using www.sjcgis.org



Owner/Builder Furnished Conduit

Owners/Contractors can install their own facilities for future fiber use. Rock Island requirements:

- Min 18" cover
- 1" Grey PVC Sch 40 or greater
- Continuous runs no longer than 1000'
- No more than (4) 90 deg bends per run
- Spans of conduit are terminated above ground.
- Jet Line Installed (if no jet line is installed, RIC will proof and install jet line at \$.50/ft)
- Terminated on exterior of building at point of entry.

Contractors Notes for installing Rock Island Material:

- Min depth of cover 18"
- Avoid over compaction of Microduct. Preferred min lift of 10"
- Leave 2-4' of exposed Microducts at designated points for vaulting or intercepts.
- Maintain 4' clearance from other utilities at stub or vault locations.
- Bedding should be free of large rocks and ensure smooth placement of Microduct

Any other construction related questions please email build@rockisland.com or call us at 378-5884